



SK PRELUDE

78M ANCHOR HANDLING TUG SUPPLY VESSEL
150T BP | 12,070 BHP | DP2 | FIFI 1 | 39 MEN | 507M²

VESSEL PARTICULARS

Class	ABS-A1 @,AMS,ACCU, Offshore Support Vessel (Supply-HNLS,AH,TOW,FFV-1,OSR-C2), DPS-2,SPS,UWILD for Unrestricted Service
Flag	Malaysia
P.O.R	Port Kelang
Year Built	2023
Builder	Fujian Funing Shipbuilding, China
IMO	9775610
Official Number	337824
Call Sign	9M3142

DIMENSION

L.O.A.	78.20 m
Beam	18.50 m
Depth	8.00 m
Draft (max)	6.00 m
GRT	3799 Tonnes
NRT	1139 Tonnes

CARGO CAPACITIES

Deadweight	3000 Tonnes
Deck Cargo	800 Tonnes
Deck Loading	5.5 Tonnes/m ²
Deck Area	Approx 507 m ²
Fresh Water	509.6 m ³
Drill/Ballast Water	1305 m ³
Fuel Oil	1161.8 m ³
Mud/Brine	777 m ³
Base Oil/Methanol	167 m ³
Dry Bulk	310 m ³

ACCOMMODATION

1 Man Cabin	15 x 1 (15)
2 Men Cabin	12 x 2 (24)
Total	39 berths

PERFORMANCE

Speed	10 knots
Bollard Pull	172.75 Tonnes



PROPULSION & POWER PLANT

Propellers	2x Conventional CPP
Bow Thruster	2x 135KN, 900kW, IP23, CT175M-D
Stern Thruster	2x 105KN, 650kW, IP23, CT175M-D
Main Engine	2x 4500kW 750 rpm
Main Generator	2x 970kW, Cummin KTA 38-D (M1)
Emerg Generator	1x 95kW, Cummin 6CT8.3-DM

DECK MACHINERY

Tugger winch	2x 17 Tonnes SWL
Capstan	2x 10 Tonnes SWL
Provision Crane	1x 5 Tonnes SWL @ 15m radius
AHT Winch	1x Electro-Hydraulic Double Drum AH/T Winch
	Line pull: 350 Tonnes
	Brake: 450 Tonnes
	Drum cap: 2000m x 76mm dia. Wire
Storage Reel	2x 2000m x 76mm dia. Wire
Karm Fork	2x 600 Tonnes SWL
Towing Pins	1x 300 Tonnes SWL
Stern Roller	2 x 3.7m(L) 2.3m(dia) approx. 500 Tonnes SWL

CARGO HANDLING CAPACITY

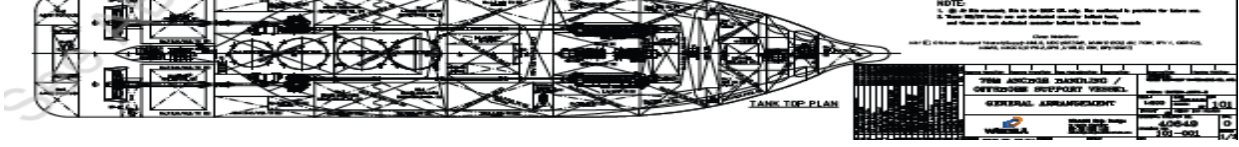
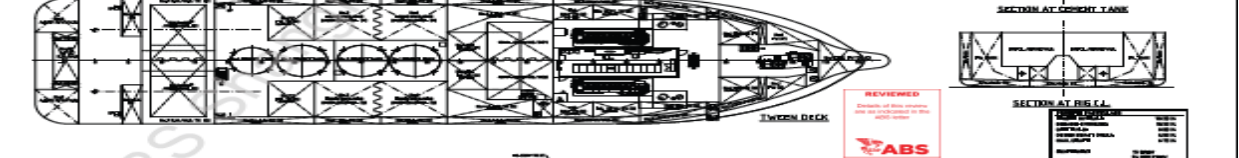
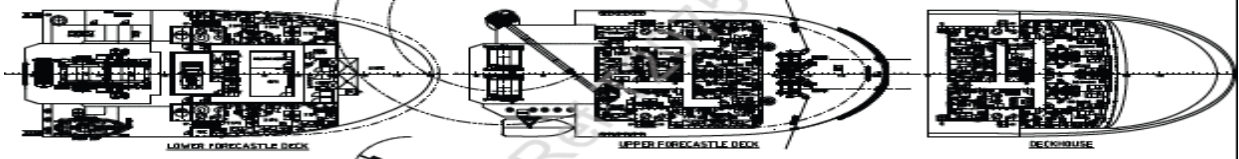
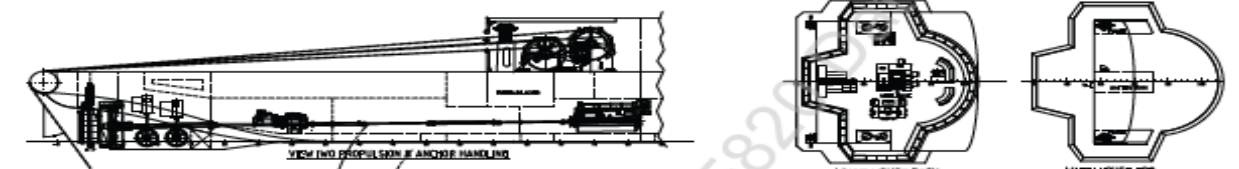
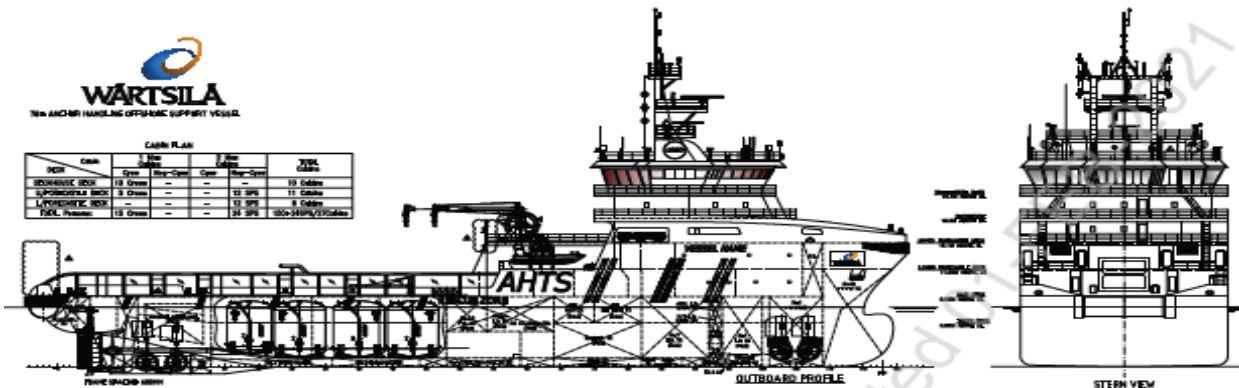
Fresh Water	1x 150 m ³ /hr @ 90 m head
Drill Water	2x 100 m ³ /hr @ 90 m head
Fuel Oil	2x 200 m ³ /hr @ 90 m head
Mud	2x 75 m ³ /hr @ 24 bar
Brine	1x 75 m ³ /hr @ 18 bar
Base Oil	1x 75 m ³ /hr @ 9 bar
Dry Bulk	2x 25m ³ /min at 5.6 bar
Water Maker	1x 10 Tonnes/day



SK PRELUDE | 78M ANCHOR HANDLING TUG SUPPLY VESSEL



CABIN PLAN					
NO.	Cabin	Area	Area	Area	Area
NO.	TYPE	NO.	TYPE	NO.	TYPE
10	10 Cabins	11	11 Cabins	12	12 Cabins
11	11 Cabins	13	13 Cabins	14	14 Cabins
12	12 Cabins	15	15 Cabins	16	16 Cabins
13	13 Cabins	17	17 Cabins	18	18 Cabins
14	14 Cabins	19	19 Cabins	20	20 Cabins
15	15 Cabins	21	21 Cabins	22	22 Cabins
16	16 Cabins	23	23 Cabins	24	24 Cabins
17	17 Cabins	25	25 Cabins	26	26 Cabins
18	18 Cabins	27	27 Cabins	28	28 Cabins
19	19 Cabins	29	29 Cabins	30	30 Cabins
20	20 Cabins	31	31 Cabins	32	32 Cabins
21	21 Cabins	33	33 Cabins	34	34 Cabins
22	22 Cabins	35	35 Cabins	36	36 Cabins
23	23 Cabins	37	37 Cabins	38	38 Cabins
24	24 Cabins	39	39 Cabins	40	40 Cabins
25	25 Cabins	41	41 Cabins	42	42 Cabins
26	26 Cabins	43	43 Cabins	44	44 Cabins
27	27 Cabins	45	45 Cabins	46	46 Cabins
28	28 Cabins	47	47 Cabins	48	48 Cabins
29	29 Cabins	49	49 Cabins	50	50 Cabins
30	30 Cabins	51	51 Cabins	52	52 Cabins
31	31 Cabins	53	53 Cabins	54	54 Cabins
32	32 Cabins	55	55 Cabins	56	56 Cabins
33	33 Cabins	57	57 Cabins	58	58 Cabins
34	34 Cabins	59	59 Cabins	60	60 Cabins
35	35 Cabins	61	61 Cabins	62	62 Cabins
36	36 Cabins	63	63 Cabins	64	64 Cabins
37	37 Cabins	65	65 Cabins	66	66 Cabins
38	38 Cabins	67	67 Cabins	68	68 Cabins
39	39 Cabins	69	69 Cabins	70	70 Cabins
40	40 Cabins	71	71 Cabins	72	72 Cabins
41	41 Cabins	73	73 Cabins	74	74 Cabins
42	42 Cabins	75	75 Cabins	76	76 Cabins
43	43 Cabins	77	77 Cabins	78	78 Cabins
44	44 Cabins	79	79 Cabins	80	80 Cabins
45	45 Cabins	81	81 Cabins	82	82 Cabins
46	46 Cabins	83	83 Cabins	84	84 Cabins
47	47 Cabins	85	85 Cabins	86	86 Cabins
48	48 Cabins	87	87 Cabins	88	88 Cabins
49	49 Cabins	89	89 Cabins	90	90 Cabins
50	50 Cabins	91	91 Cabins	92	92 Cabins
51	51 Cabins	93	93 Cabins	94	94 Cabins
52	52 Cabins	95	95 Cabins	96	96 Cabins
53	53 Cabins	97	97 Cabins	98	98 Cabins
54	54 Cabins	99	99 Cabins	100	100 Cabins



REVIEWED		DATE	
DESIGNED	DATE	CHECKED	DATE
DRAWN	DATE	APPROVED	DATE
CHECKED	DATE	DATE	DATE
DATE	DATE	DATE	DATE

THE ANCHOR HANDLING OFFSHORE SUPPORT VESSEL			
GENERAL ARRANGEMENT			
NO.	REVISION	DATE	BY
1	ISSUED FOR CONSTRUCTION	2024-09-01	SKOSV
2	REVISION	2024-09-01	SKOSV
3	REVISION	2024-09-01	SKOSV
4	REVISION	2024-09-01	SKOSV
5	REVISION	2024-09-01	SKOSV
6	REVISION	2024-09-01	SKOSV
7	REVISION	2024-09-01	SKOSV
8	REVISION	2024-09-01	SKOSV
9	REVISION	2024-09-01	SKOSV
10	REVISION	2024-09-01	SKOSV

NAVIGATION EQUIPMENT

Radars, Magnetic Compass, Gyro,
AIS, Autopilot, Echo Sounder, Speed Log,
Navtex, Weather Fax, SSAS, BNWAS

COMMUNICATION EQUIPMENT

GMDSS A1+A2+A3, VSAT

FIRE-FIGHTING EQUIPMENT

External FiFi Pump: 2x 1700 m³/hr
Monitor: 2 x 1200 m³/hr (water/foam)
Oil Dispersant 2x 6m spray booms with nozzles

SAFETY EQUIPMENT

Rescue Boat 1x 15 men Rescue Boat

SKOSV SDN BHD (986141-V)

B03-B-16-1, Menara 3A, No.3, Jalan Bangsar, KL Eco City, 59200 Kuala Lumpur, Malaysia
Tel : +603-2280 6777 | Fax: +603-2201 7778 | Email : commercial@skosv.com.my

Disclaimer : All information provided here is accurate at the time of printing and may be subject to change without prior notice. While every reasonable care has been taken in preparing this document. SKOSV Sdn Bhd will not be held responsible for any inaccuracies.